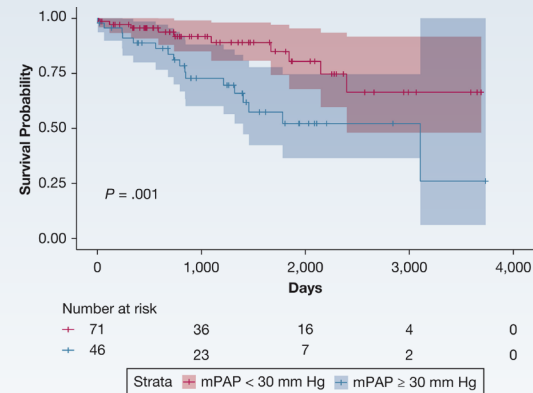
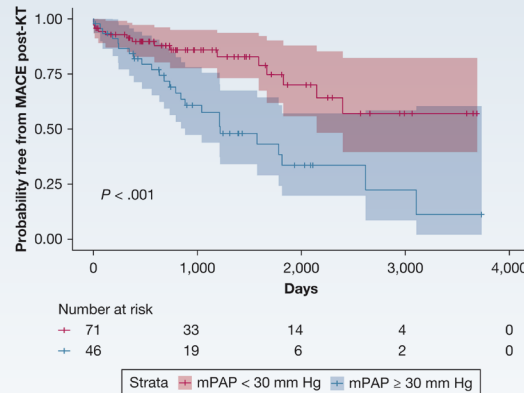


# What Is the Relationship Between Cardiopulmonary Hemodynamics and Post-Kidney Transplant Outcomes?

## STUDY DESIGN

- Multicenter, retrospective study of 117 patients who underwent right heart catheterization within 1 year of kidney transplantation (KT)
  - 93 (79%) with pulmonary hypertension, defined by a mean pulmonary artery pressure (mPAP) > 20 mm Hg
  - Cohort followed for a median of 29.9 months

## RESULTS



- Post-kidney transplant mPAP ≥ 30 mm Hg was associated with HR, 2.65 (95% CI, 1.10, 6.10) for major adverse cardiac events (MACEs)
- Precapillary pulmonary hypertension was associated with HR, 3.71 (95% CI, 1.07, 12.90) for all-cause mortality

In this study, recapillary pulmonary hypertension and a mPAP ≥ 30 mm Hg was associated with mortality and MACE following kidney transplantation.