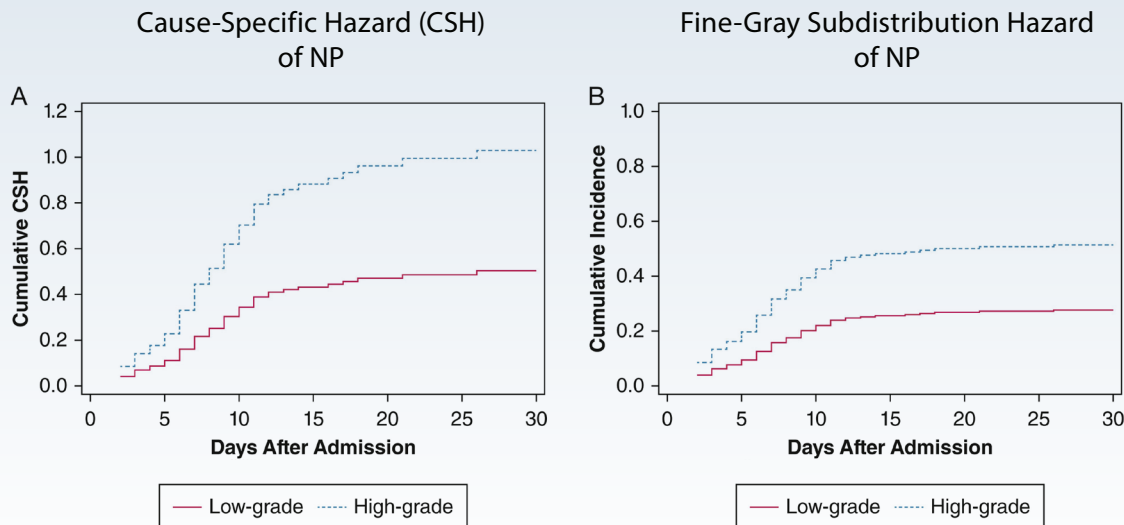


Is More Severe Inhalation Injury Associated With Increased Risk of Nosocomial Pneumonia?

STUDY DESIGN

- Retrospective study of 245 patients with suspected inhalation injury who underwent diagnostic bronchoscopy within 48 hours
 - 51 (21%) with high-grade injury (Abbreviated Injury Scale [AIS] grade 3 and 4): 24 nosocomial pneumonia (NP)
 - 180 (73%) with low-grade injury (AIS grade 1 and 2): 54 NP

RESULTS



In this study, among patients with inhalation injury, more severe injury was associated with higher hazard of nosocomial pneumonia.