

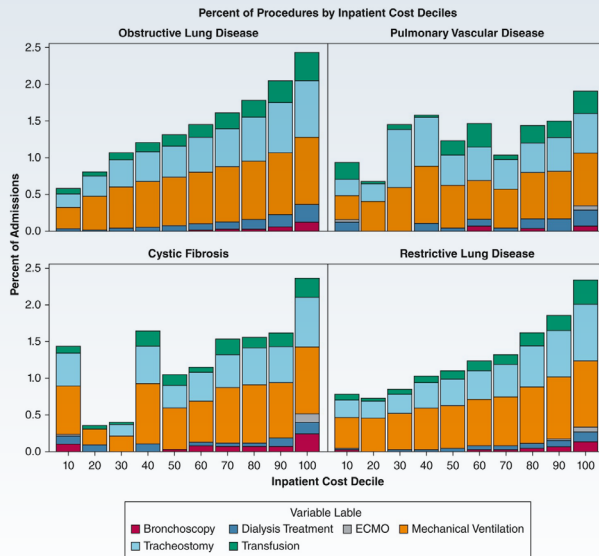
What Are the Costs Associated With End-of-Life Hospitalizations for Pulmonary Disease and How Have These Trends Changed Over Time?

STUDY DESIGN

Analysis of hospitalization data in the Cost and Utilization Project National Inpatient Sample from 2009 to 2019 to identify pulmonary disease admissions, complications, procedures, and interventions for **end-stage lung disease**

Patients with lung transplant were excluded

RESULTS



4.1% (109,924) admissions resulted in in-hospital mortality



94% hospitalizations were from obstructive lung disease with 88.1% of in-hospital mortality



Estimated \$29,981 per hospitalization with wide variation by diagnosis and procedure



Use of **mechanical ventilation**, extracorporeal membrane oxygenation (ECMO), and dialysis over time

The results of this study show that end-of-life hospitalizations for individuals with pulmonary disease are costly and may be averted in selected individuals who undergo lung transplantation.