

Looking Forward, Giving Back

Pulmonary and critical care medicine has been an important part of my life, with CHEST playing an integral role along the way through annual meetings, the *CHEST Journal*, and educational support. Many others and I have given back to CHEST through providing volunteer work, education to our members, participation on committees, and, since its founding in 1996, engaging in the CHEST Foundation. Supporting the CHEST Foundation allows me to directly support

initiatives that are important to all of us. It is essential for CHEST members to understand the benefit of their contributions to the foundation. Our donations support the research grants and award programs for clinical research in our fields, youth tobacco prevention programs, community



Stephanie M. Levine, MD, FCCP
Chair, CHEST Foundation

service and humanitarian activities in the US and internationally, and patient education related to pulmonary, critical care, and sleep medicine topics. I was also honored to donate to the *Beyond Our Walls* Campaign that has resulted in our stunning new LEED Silver-Certified headquarters building!

As I conclude my tenure as a member of the Board of Trustees, CHEST Foundation President, and CHEST Foundation Chair, I look back proudly at both the mission and financial strength of the CHEST Foundation. We have evolved into the vibrant, growing, philanthropic arm of CHEST. I look forward to my continued involvement and support of the CHEST Foundation, and I would encourage each and every one of you to continue your involvement and support of our foundation. ■

Our Youngest Donor!

“Thank you for helping people.”

Those are the words of young Julius Loonen, who sent us this note along with his donation to the CHEST Foundation.



Dear Chest Foundation,

My Name is Julius Loonen, I live in Marshall Michigan. We had to do persuasive Speeches as a project. We had to choose a charity to write a speech about and I chose the chest Foundation. Because my father is an active Smoker, So I decided to dedicate my speech to him. I won some money to donate to this charity.

Thank you for the time and for helping people,
Julius Loonen 7th grade

Community Service and Humanitarian Programs

Since 1996, the foundation has given more than **\$1.5 million** to support community service and humanitarian programs. Our grants recognize outstanding work by CHEST members who donate their time and medical expertise to not-for-profit or nongovernmental organizations helping people in the US and around the world. Below are some of the 2013 grants. ■



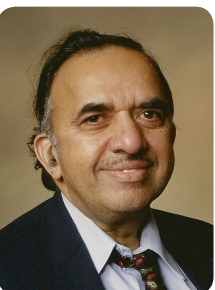
Rafael Durand, MD, FCCP
Centro de Salud
San Bartolo Medicina
Empowerment of People Affected with Tuberculosis for Better Health Care in Lima, Peru



Khoulood Fakhoury, MBBS, FCCP
Baylor College of Medicine,
Pediatrics
Mobile Clinic in Lebanon: Influenza Vaccination and Infection Control Education Among Syrian Refugee Camps



Robert Hite, MD, FCCP
Wake Forest
School of Medicine
SECU Family House Education Program – Caregiver Education Videos



Raghu Sundaram, MBBS
Central Alabama Veterans
Health System
Comprehensive Care Delivery in Southern India

Your Gifts in Action

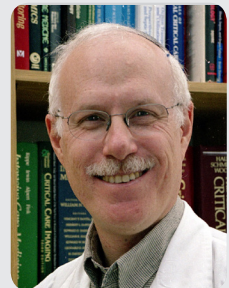
Each year, the CHEST Foundation provides grants to promote research and education that can lead to improved patient care and provide new treatment options. Thanks to contributions from individuals, corporations, foundations, and private practices, the foundation has given more than **\$7 million to support clinical research and education grants** since its inception. In 2013, nearly \$400,000 was dedicated to these worthy projects. Shown here are a few examples:



LT Angela DiCarlo-Meacham, MC, USN
US Naval Hospital Okinawa –
Obstetrics and Gynecology
The CHEST Foundation and the Respiratory Health Association of Metropolitan Chicago Clinical Research Grant in Women’s Lung Health Exercise During Pregnancy and Prevention of Dyspnea of Pregnancy



Nicola Hanania, MBBS, FCCP
Baylor College of Medicine
GlaxoSmithKline Distinguished Scholar in
Respiratory Health
Development of a “Spirometry Toolkit” to Improve Knowledge and Appropriate Use of Spirometry in the Primary Care Setting



Charles Sprung, MD, FCCP
Hadassah Hebrew University
Medical Center
Roger C. Bone Advances in
End-of-Life Care Award
End-of-Life Care Training of Israeli Critical Care Physicians



CHESTTM
FOUNDATION

New Annual Fund Giving Club Recognition and Benefits

We are pleased to provide the following recognition and benefits to our generous individual donors to the Annual Fund. It is through your support that we can continue to deliver successful programs and activities that educate

patients, inform professionals, and improve patient care. If you have any questions about this grid or if you would like to make a donation, please contact Patti Steele, Annual Fund Manager, at psteele@chestnet.org or 224/521-9527. ■

Recognition Benefit	All Donors	\$250	\$250 Young Physicians and Allied Health Members	\$1,000	\$5,000 (over 3 years)	\$10,000 (over 3 years)	\$25,000 (over 5 years)
Online Donor Listing	•	•	•	•	•	•	•
Annual Meeting – Recognition Ribbon	•	•	•	•	•	•	•
Annual Meeting – Name on Donor Board		•	•	•	•	•	•
Annual Meeting – Early Notice of Hotel Registration			•	•	•	•	•
Annual Meeting – Donor Lounge Access			•	•	•	•	•
Annual Meeting – Early Notice of Course Registration			•	•	•	•	•
Honor Roll of Donors in <i>CHEST Physician</i>			•	•	•	•	•
Annual Meeting – Preferred Hotel Choice					•	•	•
Annual Meeting – Name on Slides at Opening Session					•	•	•
Annual Meeting – Photo on Slides at Opening Session						•	•
Annual Meeting – Photo on Donor Board						•	•
Annual Meeting – VIP Experience (Car Service From Airport and Hotel Advance Check-in)						•	•
Annual Meeting – Name Listed in Publication						•	•
Annual Meeting – Invitation to President's Reception							•
Recognition Pin							•

Give \$Stock and Get a Tax Break

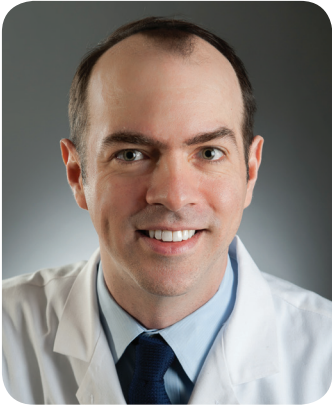
Giving appreciated stock or mutual funds to the CHEST Foundation gives you an extra tax benefit: You can deduct the current value of the investment as a charitable contribution if you itemize, and you'll avoid paying capital-gains taxes on the profits. If you sold the stock first and then wrote a check, you would end up owing capital-gains taxes.



Visit our website at chestnet.org/foundation for stock transfer instructions and more details.



From young investigator to leader in the field



David J. Lederer, MD, MS, FCCP

Then

2005 CHEST Foundation
Young Investigator Award recipient

Now

Director of the Interstitial Lung Disease Program and the Associate Medical Director of the Lung Transplant Program at Columbia University Medical Center. Dr. Lederer leads two large multi-center observational studies in pulmonary fibrosis and lung transplantation supported by the National Institutes of Health and the Pulmonary Fibrosis Foundation.

"Ten years ago, CHEST helped me transition from a fellowship trainee to a funded junior faculty member. Today, it's harder than ever for fellows to make this transition. Support from the CHEST Foundation can help grow tomorrow's clinical investigator workforce in pulmonary, sleep, and critical care medicine."

**Make a Gift.
Make a Difference.**

Online: chestnet.org/store/donate



Phone: 800/343-2227



Our mission is to develop resources to champion the prevention, diagnosis, and treatment of chest diseases through education, communication, and research.

CHEST FOUNDATION
2595 Patriot Blvd
Glenview, Illinois
60026

Non-Profit Org.
U.S. Postage
PAID
Eudora, Kansas
Permit No. 3